



2018 Red Flannel Saddle Club Speed Series

Dates - 6/24, 7/8, 8/12, 8/26, 9/9, and 10/7

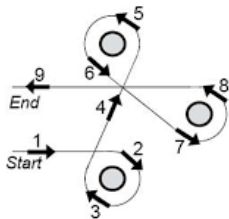
All shows start at 9:00 am sharp

Daily high point awards for each division - OPEN

You must be a RFSC member and attend at least 5 of the 6 shows in the series to qualify for Year-end Awards.

Pole Bending, Texas Flag, Cloverleaf, Down & Back

1 Payback Class at each show: Rotating between Pole Bending and Cloverleaf



Barrel Racing

Age Divisions: 8 & Under, 9-13, 14-18, 19-34, 35 & over

All participants must complete a RFSC waiver for 2018

A current negative Coggins dated no earlier than 12 months prior to the date of the show must be presented at the time of entry.

ALL PARTICIPANTS 18 AND UNDER MUST WEAR A HELMET.

Entry Fees

Office Fee: \$5.00 per horse/rider combo., \$1 per extra horse

Payback Class: \$10.00 with 80% payback. Number of placings paid based on number of riders.

Member: \$4.00 per class or \$15.00 for all classes (\$20 w/office)

Non - member: \$5.00 per class or \$20 for all (\$25 w/office)

Expo class: \$3.00



Complete Speed Series rules posted at the entry booth. Electric timers used. **Judge's decision is FINAL.**
DRESS CODE: LONG PANTS, BOOTS OR APPROVED FOOTWEAR, SHIRT (NO HALTER TOPS)



Red Flannel Saddle Club and its members are not responsible for loss or injury of person, horse or property. No alcoholic beverages allowed on the grounds. Dogs must be on a **HELD** leash

FAMILY FUN AND AWARDS AT EVERY SHOW!

Red Flannel Saddle Club

6272 21 Mile Road – West off Shaner Ave., Sand Lake

(Call Tina at 231-206-5246 with questions)